



Proposed Bonneville Washington Shore Fish Ladder Count Station Modifications to Improve Pacific Lamprey Passage



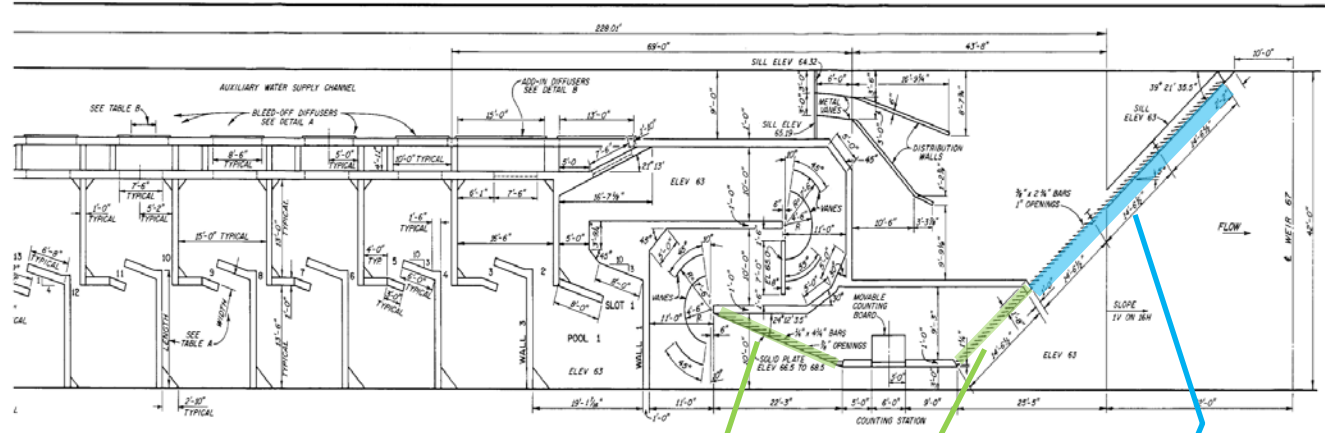
FPOM
21 December 2010
Sean Tackley (503-808-4751)



US Army Corps of Engineers Portland District



TM



PLAN

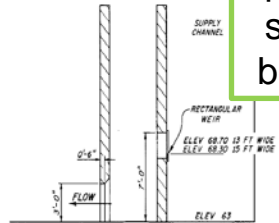
Upstream picket lead sections to be modified

Downstream picket lead section to be modified

Picket lead lamprey ramp to be installed

TABLE B

POOL NO.	ELEV. IN FEET	WIDTH IN FEET
4	68.91	3.42
6	69.78	4.50
8	70.15	3.60
10	70.67	3.20
12	71.43	2.00

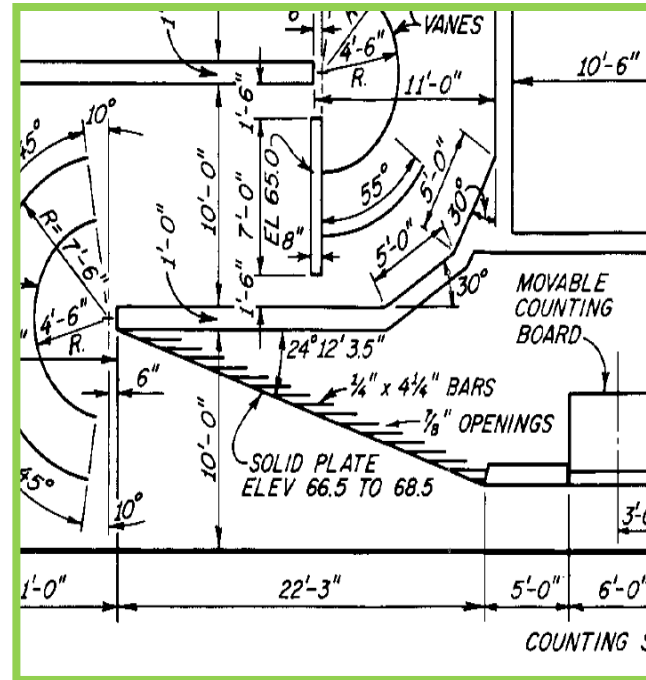


ADD-IN DIFFUSERS
DETAIL B

4	2.10	14.00
5	2.34	15.77
6	1.98	14.00
7	2.31	15.70
8	1.97	14.00
9	2.27	15.66
10	1.96	14.00
11	2.29	15.67
12	1.94	14.00
13	2.15	15.01
14	1.86	14.00
15	1.97	14.81
16	1.72	14.00
17	1.83	14.63
18	2.13	

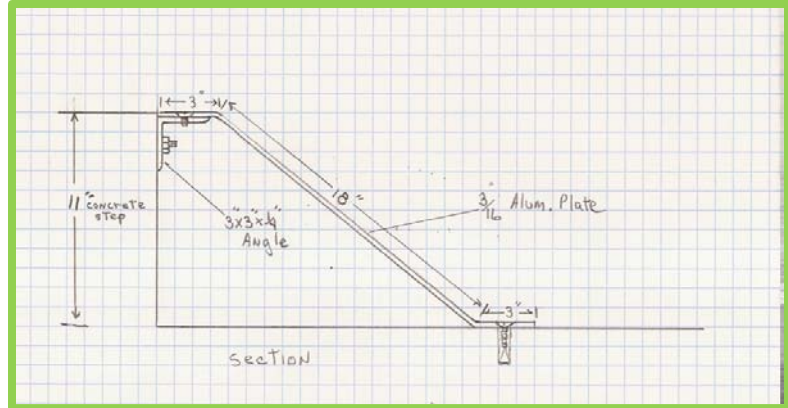
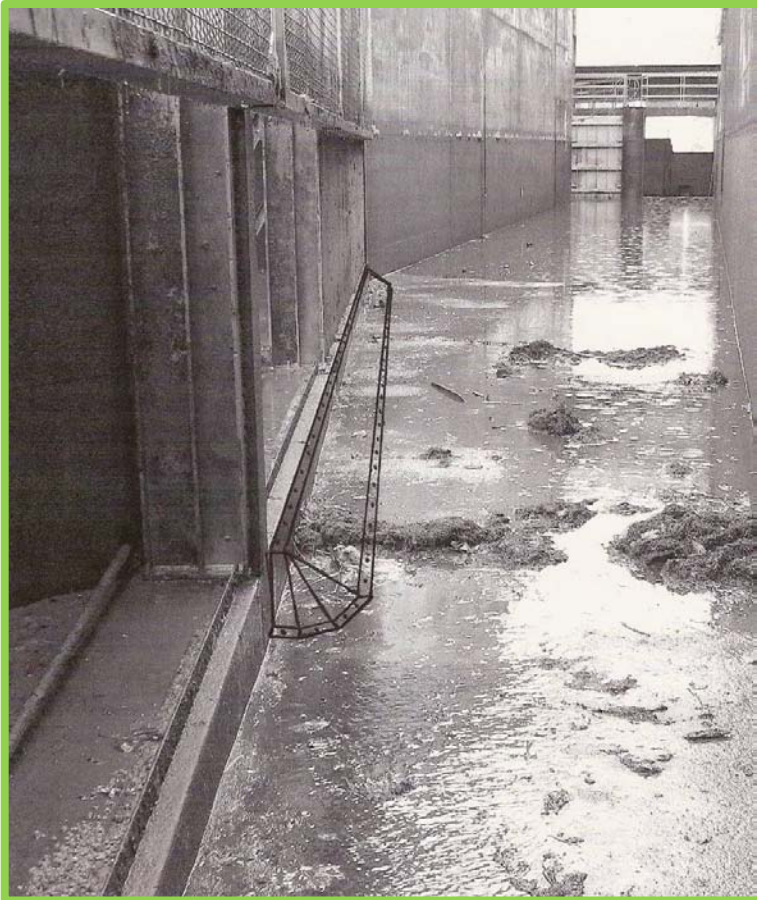
PLAN G EXIT CONTROL SECTION
AND COUNTING STATION
BRADFORD ISLAND FISH LADDER

Bonneville WA Shore Count Station Modifications: Reduce Spacing and Bar Thickness of Upstream Picket Leads



- Modify or replace 4 upstream picket lead sections
- Each section is 60" x 42"
- Spacing will change from 7/8" openings to 5/8" openings
- Bar thickness will change from 1/4" to 1/8"

Bonneville WA Shore Count Station Modifications: Install Picket Lead Lamprey Ramp



- Ramp covers concrete sill (~11") at base of picket leads, downstream of count station
- All joints and end closures will be field fit welded and ground smooth
- All fasteners are stainless steel and countersunk